

Core Location

Adding Where to Your Apps

Bill Dudney
Gala Factory Software LLC





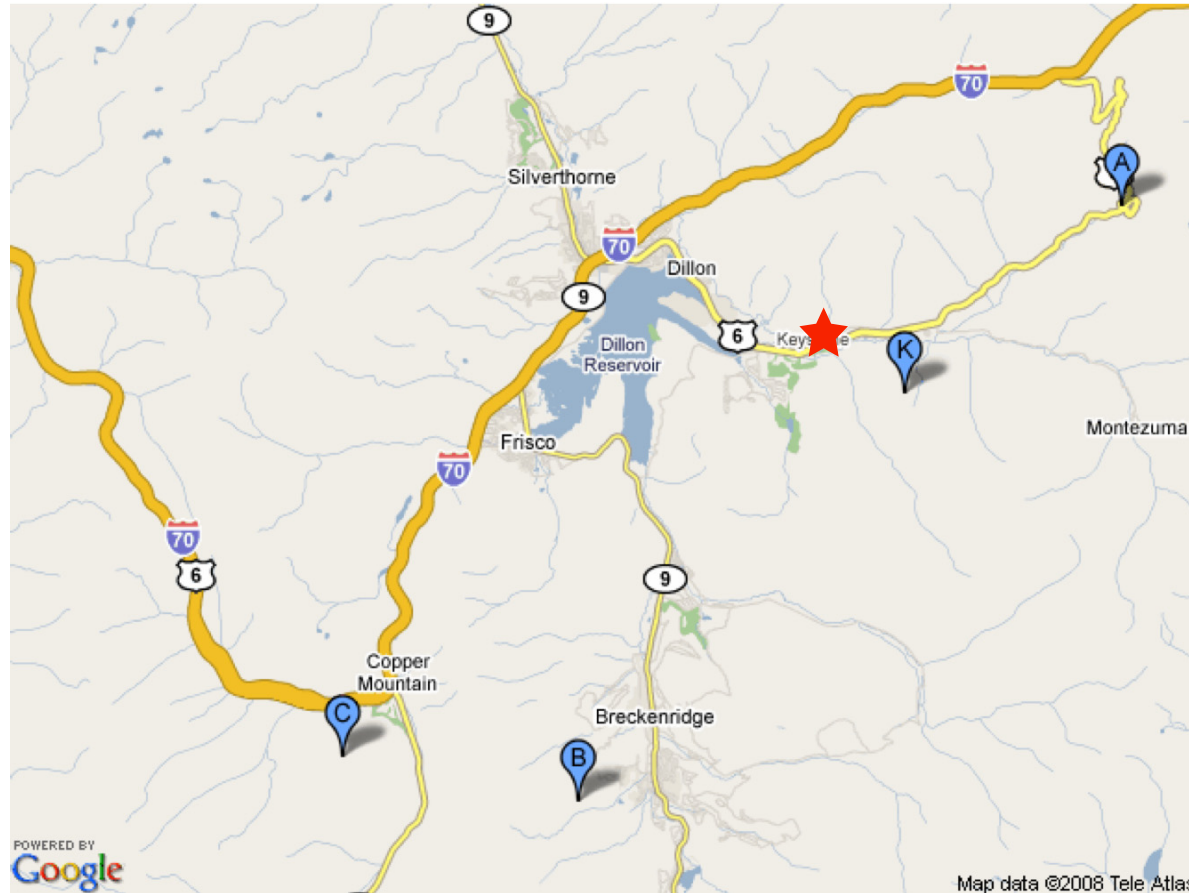
Location - Why?

- Navigation
- Social
- Content - news, entertainment
- Search and Advertising
- Gaming
- Tracking



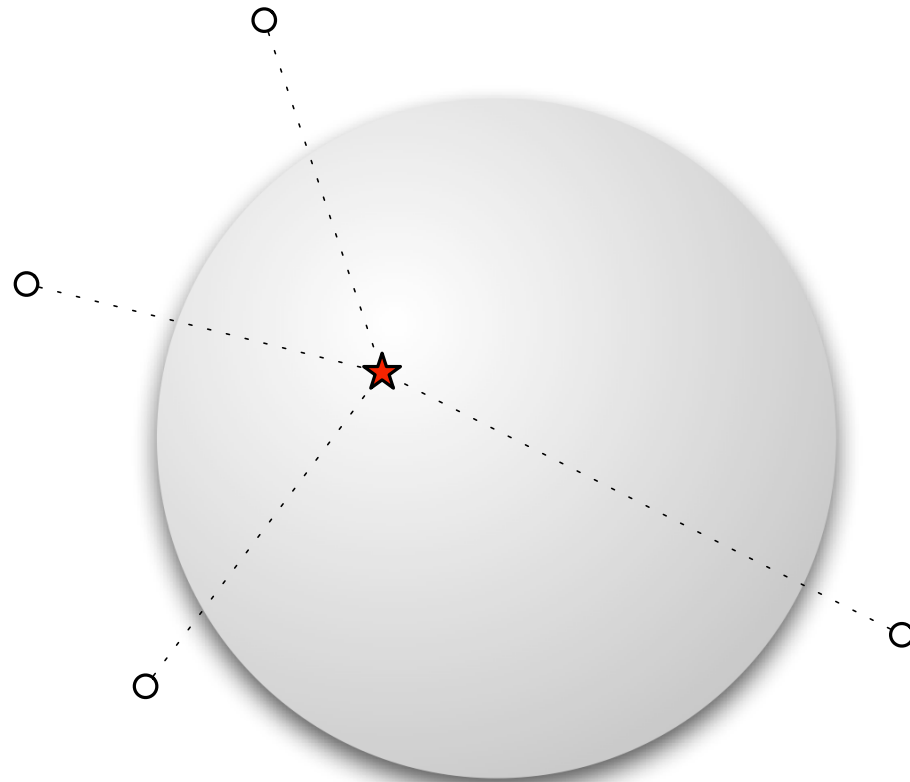


Location - Why?





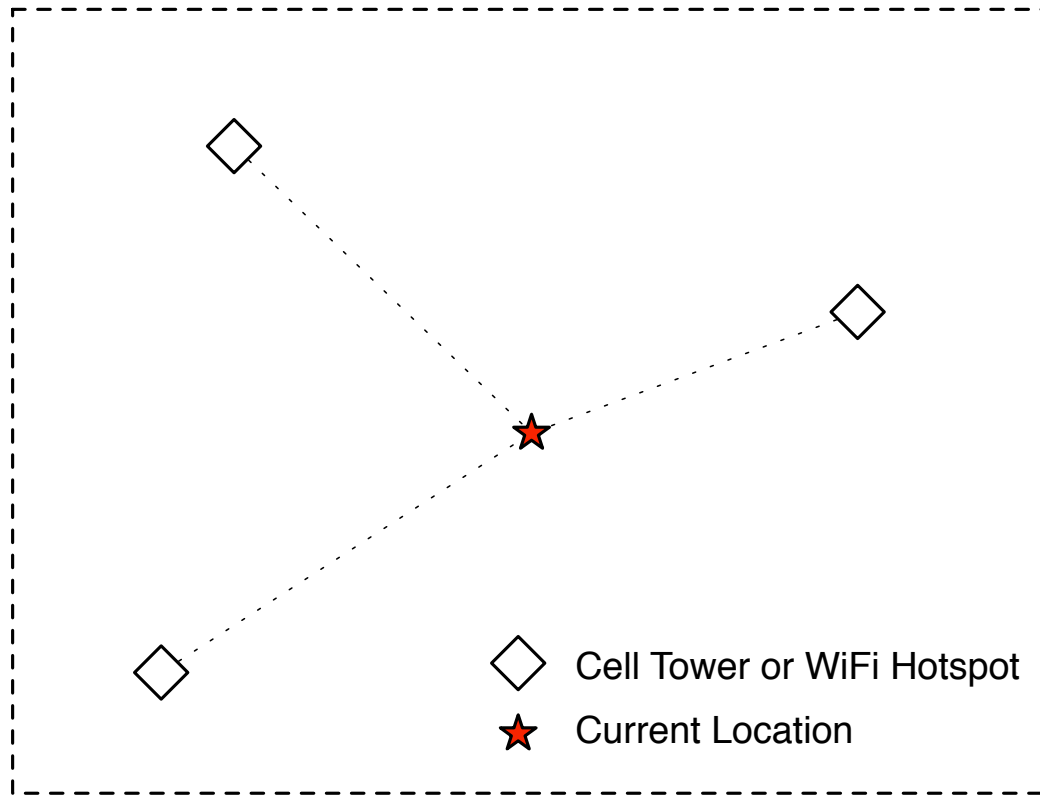
Location - How?



- Satellite
- ★ Current Location



Location - How?



Skyhook Wireless



Used?

- Over 300 apps on the AppStore!





Objective-C

- 2 Files: Header & Implementation

```
@interface Customer : NSObject {  
}  
@end
```

```
@implementation Customer  
@end
```



A graphic consisting of a vertical black line intersecting a horizontal black line. To the left of the intersection are three overlapping squares: a yellow one on top, a red one on the left, and a blue one on the bottom.

Objective-C

- Methods - interface

```
@interface Customer : NSObject {  
}  
+ (NSArray *)allCustomers;  
- (Money *)averageMonthlySpending;  
@end
```





Objective-C

- Methods - implementation

```
@implementation Customer
+ (NSArray *)allCustomers {
}

- (Money *)averageMonthlySpending {
}
@end
```



A graphic consisting of a vertical black line intersecting a horizontal black line. To the left of the intersection are three overlapping squares: a yellow one on top, a red one on the left, and a blue one on the bottom.

Objective-C

■ Properties - interface

```
@interface Customer : NSObject {  
    NSString *firstName;  
}
```

```
@property(nonatomic, retain) NSString *firstName;
```

```
@end
```





Objective-C

- Properties - implementation

```
@implementation Customer
```

```
@synthesize firstName;
```

```
@end
```



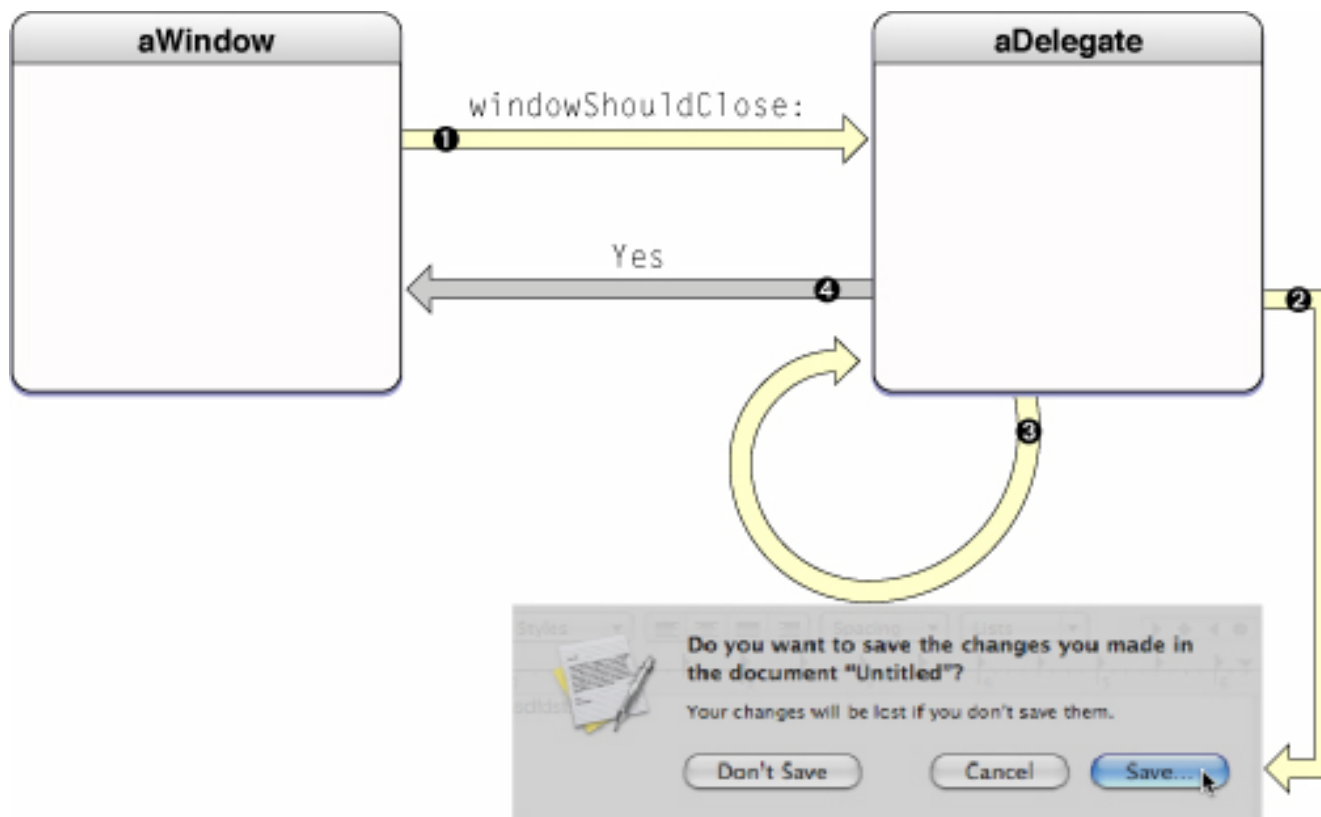


Tools

- Xcode
- Interface Builder

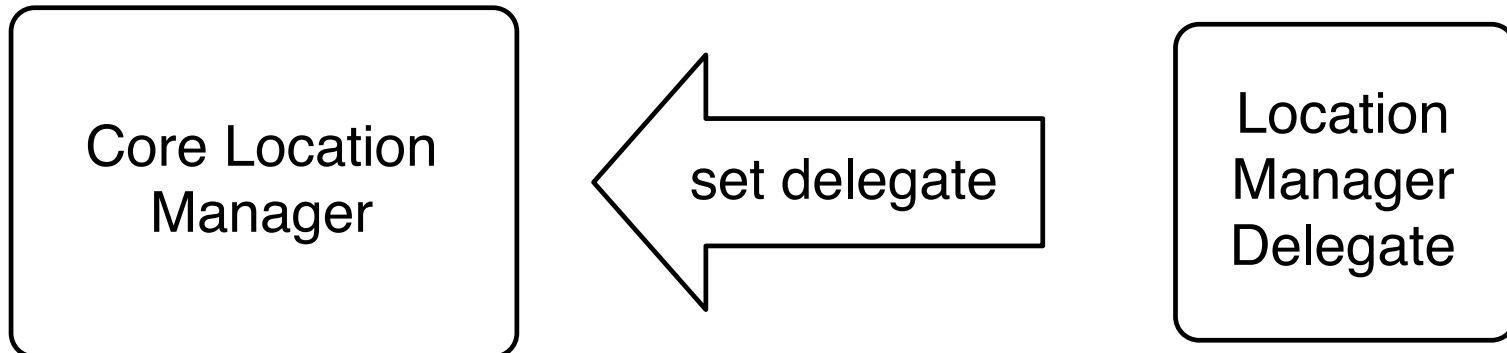


Delegation



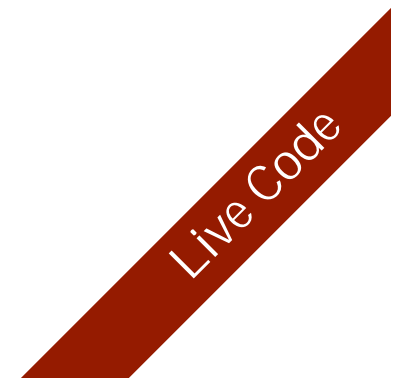
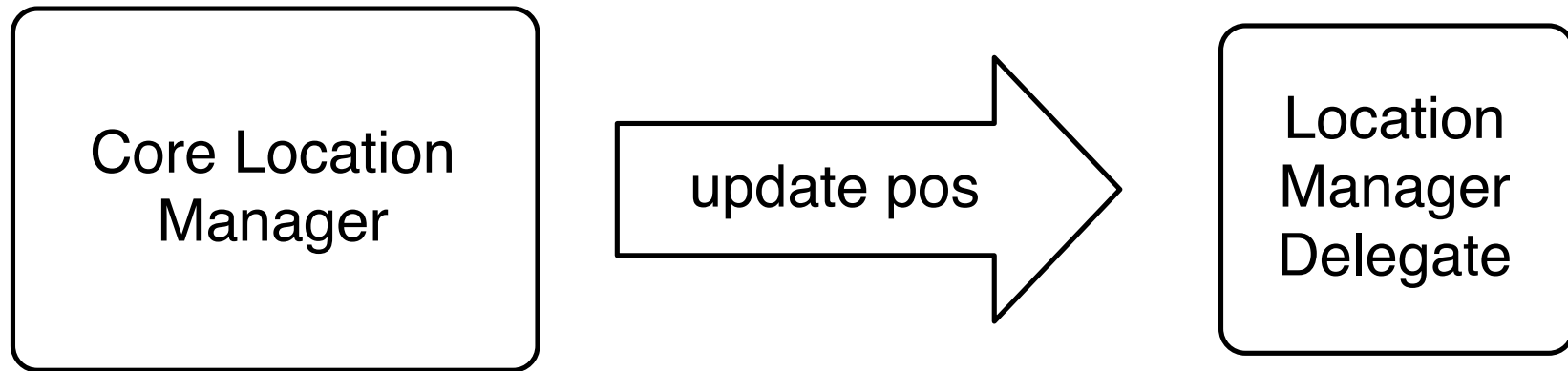


iPhone Core Location





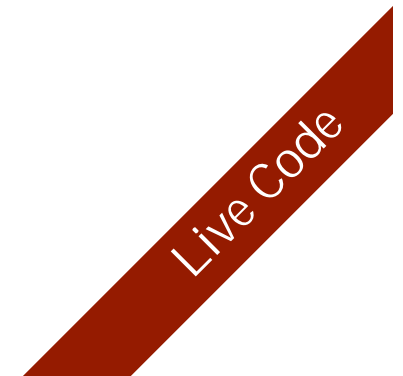
iPhone Core Location





Static Google Maps

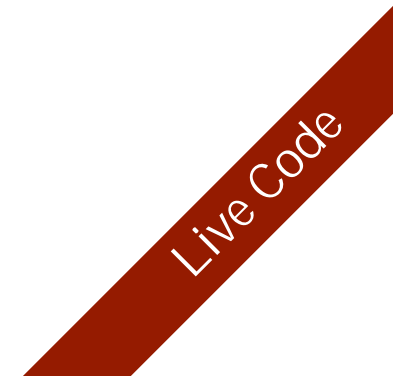
- REST - URL based map generation
 - Send a URL out pops an image
- Parameters
 - Zoom
 - Image Size
 - Map Type
 - Markers
 - Paths





Points of Interest

- Interesting places around you
 - Scenic Overlook
 - Hospital
 - Friends
 - *etc.*





Google Geocoding

- REST based - URL in XML out
 - Lat & Long for and address
- Parameters
 - Address
 - output type (xml, jason, csv)



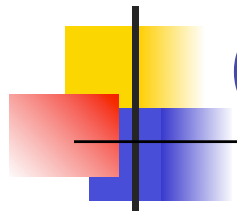


Distance

- Great Circle

- distance along the surface of the earth between two locations





Q & A

